



# TEA MARKET REPORT

## JOHN KEELLS PLC

**SALE NO.19 – 20<sup>TH</sup> / 21<sup>ST</sup> MAY 2025**

# ORDER OF SALE (SALE NO. 19 – 20<sup>TH</sup> / 21<sup>ST</sup> MAY 2025)

Main Sale Order – 1 (Leafy / Semi Leafy / Tippy / Premium / 1A)	Main Sale Order – 2 (H & M / Off Grade / Dust)	Ex-Estate
FORBES & WALKER TEA BROKERS (PVT) LTD	LANKA COMMODITY BROKERS LTD	ASIA SIYAKA COMMODITIES PLC.
MERCANTILE PRODUCE BROKERS (PVT) LTD	MERCANTILE PRODUCE BROKERS (PVT) LTD	FORBES & WALKER TEA BROKERS (PVT) LTD
BARTLEET PRODUCE MARKETING (PVT) LTD	FORBES & WALKER TEA BROKERS (PVT) LTD	EASTERN BROKERS. LTD.
LANKA COMMODITY BROKERS LTD	EASTERN BROKERS. LTD.	CEYLON TEA BROKERS PLC
EASTERN BROKERS. LTD.	<b>JOHN KEELLS PLC</b>	<b>JOHN KEELLS PLC</b>
<b>JOHN KEELLS PLC</b>	CEYLON TEA BROKERS PLC	LANKA COMMODITY BROKERS LTD
CEYLON TEA BROKERS PLC	BARTLEET PRODUCE MARKETING (PVT) LTD	BARTLEET PRODUCE MARKETING (PVT) LTD
ASIA SIYAKA COMMODITIES PLC.	ASIA SIYAKA COMMODITIES PLC.	MERCANTILE PRODUCE BROKERS (PVT) LTD



## AUCTION DETAILS

Auction No.	19	
Dates	20 <sup>th</sup> / 21 <sup>st</sup> May 2025	
	No. of Lots	Qty – kg
Ex Estate	1,059	1,139,471
Main Sale Total	11,379	5,873,143
High & Medium	2,124	1,087,040
Low Grown - Leafy	2,297	1,044,484
Low Grown - Semi Leafy	1,776	844,596
Low Grown Tippy	1,946	979,003
Premium / Flowery	238	43,013
Off Grades	2,482	1,355,193
Dust	516	519,814
Grand Total	12,438	7,012,614
Reprints	285	161,526
<b>Total No. of Lots Offered</b>	<b>12,438</b>	
<b>Total Quantity Offered (kg)</b>	<b>7,012,614</b>	

## PROMPT DATES

Auction No.	Buyers	Sellers
19	27/05/2025	28/05/2025



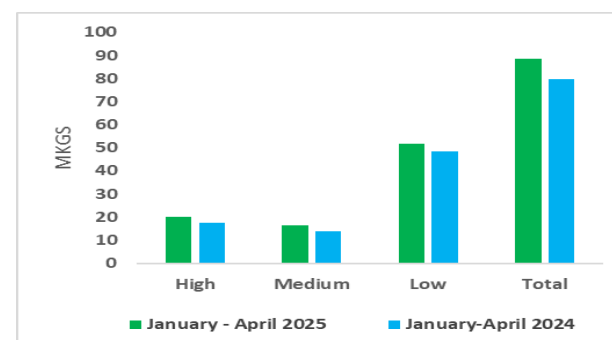
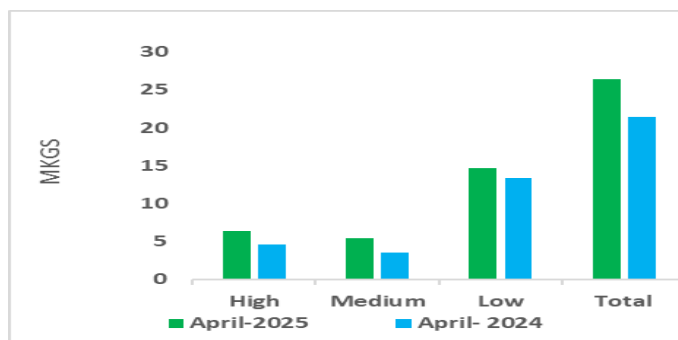
# COMMENTS



Sri Lanka harvested a crop of 26.3Mkg during the Month of April 2025, which is a 23% increase in comparison to the crop harvested in April 2024, which was at 21.4Mkg. Incidentally, the April production of 26.3Mkg has been the highest recorded for the month of April since the year 2021.

The main contributor for the 26.3Mkg was from the Low Grown planting districts with 55.5%, followed by High Grown at 24.1% and Medium Grown at 20.4%. When compared with the crop in April 2024, positive variances were recorded in the High Grown at 38.4%, Medium Grown at 51.6%, and Low Grown at 10%.

Tea Production April 2025								
Black Tea Production According to Elevations								
Elevation	April (Kg)				January to Date (Kg)			
	2025	2024	Change	% Change	2025	2024	Change	% Change
High	6,353,556	4,588,783	1,764,773	38.46%	20,227,499	17,656,285	2,571,214	14.56%
Medium	5,390,377	3,555,261	1,835,116	51.62%	16,488,643	13,719,837	2,768,806	20.18%
Low	14,648,604	13,320,564	1,328,040	9.97%	51,666,045	48,357,316	3,308,729	6.84%
Total	26,392,537	21,464,608	4,927,929	22.96%	88,382,187	79,733,439	8,648,748	10.85%





## COMMENTS – Cont'd....



Tea Exports for the month of April 2025 were recorded at 18.2Mkg which is an increase of 11.1% when compared with the same period of the previous year. The average unit FOB value per kg was Rs.14.86 higher than the previous. The cumulative Export quantity for the year recorded a positive variance of 2.7Mkg against the corresponding period. The cumulative average FOB value recorded a decline of Rs.28.75 against last year's average FOB price during the same period. Therefore, the value of Tea Exports for the period (January- April) in 2025 recorded a positive variance of Rs.2.4 billion in comparison to the previous year. Iraq emerged as the leading importer of Sri Lanka Tea followed by other major importers such as Libya, Russia, U.A.E and Turkey.

1.1Mkg of Ex- Estate teas on offer met with lower demand. Select Best Western High Grown BOPs barely maintained and mostly declined from last levels, the below best and plainer varieties were easier. Select best Western High Grown BOPFs were irregularly lower, the below best and plainer sorts commenced lower and declined further as the sale progressed, with a large volume remaining unsold due to lack of suitable bids. Nuwara Eliya BOPs/ BOPFs mostly remained unsold. Uda Pussellawa BOPs declined, the BOPFs too eased by a similar margin. Uva BOPs were mostly easier, the BOPFs declined. Low Grown CTC BP1s gained irregularly, the High and Medium sorts were tending irregular. Low Grown CTC PF1s declined from last levels, the High and Mediums sorts too followed a similar trend.

The 2.8Mkg of Low Grown teas on offer met with fair demand. In the Leafy segment, OPs / OPAs were firm to easier. OP1s were firm on last levels. BOP1s sold at last levels. PEKOE were firm to easier, PEKOE1s were firm on last. In the Small Leaf segment, well-made FBOPs were firm, bolder types were irregular. FBOPF1s were firm. BOPF.SP, BOPF, BOP.SP and BOPs were firm to easier. Well-made FBOPF invoices met with good demand, others were irregular. Premium Flowery teas were irregular.

Turkey, Russia and the C.I.S countries lent fair support. Libya and Iraq were active.





## MARKET DESCRIPTION

### Western Teas

Select best Western High Grown BOPs barely maintained last levels, the below best and plainer varieties declined Rs.40/- to Rs.60/-. Select best Western High Grown BOPFs were irregularly easier, the below best and plainer sorts declined by Rs.40/- to Rs.80/- and more with a large volume remaining unsold due to a lack of suitable bids. Medium BOPs declined Rs.50/- to Rs.100/- and more. The BOPFs declined Rs.40/- to Rs.60/- on average.

### Nuwara Eliya Teas

BOPs mostly remained unsold. The BOPFs too followed a similar trend.

### Uva Teas

Uva BOPs were mostly easier by Rs.40/- to Rs.50/-. The BOPFs declined by Rs.40/- to Rs.80/- and more as the sale progressed. Uda Pussellawa BOPs declined Rs.20/- to Rs.40/- and more. The BOPFs too were easier by a similar margin.

### CTC Teas

Low Grown CTC BP1s gained irregularly. The High and Medium sorts were tending irregular. Low Grown CTC PF1s declined Rs.20/- to Rs.40/-. The High and Medium sorts too followed a similar trend.

## QUOTATIONS

	BOP – RS.	BOPF – RS.
Good Westerns	1100 – 1380	1120 – 1320
Average Westerns	1000 – 1060	1020 – 1100
Plainer Westerns	820 – 980	810 – 1000
Western Mediums	830 – 1600	790 – 1020
Uva Teas	840 – 1100	830 – 1100
Nuwara Eliya Teas	1240	1240
Uda Pussellawa Teas	830 – 1100	820 – 900
CTC (BP1 and PF1)	720 – 1240	720 – 1550





# MARKET DESCRIPTION

## Low Grown

Select best OP1s were firm on last levels, other wiry OP1s met with mixed interest, below best types along with the secondaries gained from last levels. Well-made OPs commenced easier with demand increasing towards the latter stages of the sale, secondaries were irregular. Well-made OPAs were firm to easier, below best types improved irregularly. Well-made BOP1s were firm, others were irregular. Well-made Pekoes were firm to easier, bolder types were firm to selectively dearer, others were lower to last. Select best Pekoe1s were firm to easier, rest met with good demand.

BOPs in general were firm on last. BOP.SP.s, BOPF.SP.s and BOPFs were firm. All FBOPF1s in general were firm. Well-made FBOPs were firm, whilst the bolder types met with irregular demand. FBOPFs in general were firm. Premium Flowery teas met with irregular demand.

## Off Grades

Select best FGS1s were firm on last levels whilst best types appreciated by Rs.20/- to Rs.30/-, below best and poorer sorts were firm on last levels. Select best and best BMs depreciated by Rs.10/- to Rs.20/-, below best and poorer sorts maintained on last levels. Select best and best BPs were dearer by Rs.20/- to Rs.40/- and more towards the closure, below best and poorer varieties maintained on last levels. Select best BOP1As were higher by Rs.30/- to Rs.60/-, best types were lower by Rs.40/- to Rs.50/-, below best types were lower by Rs.20/- to Rs.30/-, whilst poorer types were lower by Rs.40/- to Rs.60/-.

## Dust

Select best and best Dust1s were firm, below best and poorer types were easier by Rs.20/- to Rs.40/-. All CTCs were firm on last. Low Grown Dust / Dust1s declined by Rs.40/-.



# QUOTATIONS

	Select Best	Best	Below Best	Others
<b>LIQUORING</b>				
DUST-1	1260.00 - 1550.00	1140.00 - 1250.00	900.00 - 1130.00	660.00 - 890.00
<b>OFF GRADES</b>				
FGS1	1100.00 - 1160.00	980.00 - 1090.00	860.00 - 970.00	680.00 - 850.00
FGS	850.00 - 920.00	780.00 - 840.00	740.00 - 770.00	660.00 - 730.00
<b>LOW GROWNS</b>				
FBOPF / FFSP / FFEXSP	4400.00 - 4800.00	3950.00 - 4200.00	2800.00 - 3500.00	1000.00 - 1200.00
BOP	1700.00 - 2000.00	1350.00 - 1400.00	1000.00 - 1300.00	950.00 - 1000.00
BOPSP	1700.00 - 1800.00	1400.00 - 1600.00	1000.00 - 1100.00	900.00 - 950.00
BOPF	1200.00 - 1350.00	900.00 - 1000.00	850.00 - 900.00	800.00 - 850.00
FBOPF1	1600.00 - 1700.00	1450.00 - 1500.00	1350.00 - 1400.00	1000.00 - 1100.00
FBOP	2100.00 - 2300.00	1600.00 - 1750.00	1250.00 - 1400.00	1000.00 - 1100.00
BOP1	2100.00 - 3000.00	1700.00 - 2000.00	1050.00 - 1400.00	850.00 - 980.00
OP1	2400.00 - 3200.00	2250.00 - 2350.00	1600.00 - 2200.00	900.00 - 1550.00
OP	1320.00 - 1600.00	1220.00 - 1300.00	1140.00 - 1200.00	920.00 - 1120.00
OPA	1240.00 - 1500.00	1140.00 - 1220.00	1040.00 - 1120.00	860.00 - 1020.00
PEKOE	1420.00 - 2450.00	1320.00 - 1400.00	1200.00 - 1300.00	800.00 - 1180.00
PEKOE1	1650.00 - 2300.00	1400.00 - 1600.00	1300.00 - 1380.00	850.00 - 1280.00
DUST / DUST1	900.00 - 1340.00	790.00 - 890.00	720.00 - 780.00	660.00 - 710.00





# EXCHANGE RATES

The average rates currencies quoted on 21<sup>st</sup> May 2025 at 9.30 a.m. by Commercial Banks in Colombo for Telegraphic Transfers (TT).

CURRENCY	BUY RATE	SELL RATE
USD	296.20	304.61
EURO	333.74	346.47
GBP	396.19	410.24



- **Top Prices**
- **Colombo Auction Averages**
- **All Brokers Private Sale Figures**



# TOP PRICES (SALE NO. 19 – 20<sup>TH</sup> / 21<sup>ST</sup> MAY 2025)



WESTERN HIGH			
BOP		Cymru	1380.00
BOPSP		Queensberry	1420.00
BOPF/BOPFSP		Alton	1320.00
FBOP/FBOP1		Bambrakelly	1700.00
FBOPF/FBOPF1	*	<b>Fairlawn</b>	<b>1500.00</b>
BOP1		Bambrakelly	1550.00
OP/OPA		Cymru	1180.00
OP1		Craig Hill	1400.00
PEKOE/PEKOE1		Craig Hill	1750.00

UVA HIGH			
BOP		Nayabedde	1100.00
BOPSP		Ranaya	1360.00
BOPF/BOPFSP		Nayabedde	960.00
		Bandaraeliya	960.00
FBOP/FBOP1		Glenanore	1600.00
FBOPF/FBOPF1		Gonamotawa	1480.00
BOP1	*	<b>Glenanore</b>	<b>1650.00</b>
		Uva Highlands	1650.00
OP/OPA		Ranaya	1260.00
OP1		Ranaya	1550.00
		Ellathota Uva	1550.00
		Uva Highlands	1550.00
PEKOE/PEKOE1		Ranaya	1550.00

NUWARA ELIYA			
BOP	*	<b>Lovers Leap</b>	<b>1240.00</b>
BOPSP	*	<b>Kenmare</b>	<b>890.00</b>
BOPF/BOPFSP		Court Lodge	870.00
FBOP/FBOP1		Kenmare	1500.00
OP/OPA	*	<b>Court Lodge</b>	<b>1140.00</b>
PEKOE/PEKOE1	*	<b>Kenmare</b>	<b>1080.00</b>

WESTERN MEDIUM			
BOP	*	<b>Nayapane</b>	<b>1600.00</b>
BOPSP		Windsorforest	1460.00
BOPF/BOPFSP		Craighead	1280.00
FBOP/FBOP1		Craighead	1750.00
		Imboolpittia	1750.00
		Harangalla	1750.00
		Dartry Valley	1750.00
		Ancoombra	1750.00
FBOPF/FBOPF1		Dartry Valley	1600.00
		Ancoombra	1600.00
		Hatale	1600.00
BOP1		Craighead	2050.00
OP/OPA		Meezan	1220.00
		Galgewatta	1220.00
		Ingurugala	1220.00
OP1		Harangalla	1550.00
PEKOE/PEKOE1	*	<b>Nayapane</b>	<b>1650.00</b>
		Craighead	1650.00
		Imboolpittia	1650.00
		Rilagala	1650.00
		Harangalla	1650.00
		Dartry Valley	1650.00

UVA MEDIUM			
BOP		Blossoms Uva Tea	1260.00
BOPSP		Uva Samovar	1360.00
BOPF/BOPFSP		Dickwella	1360.00
FBOP/FBOP1		Shawlands	1700.00
FBOPF/FBOPF1		Roseland Uva	1460.00
BOP1	*	<b>Adawatte</b>	<b>1600.00</b>
		Dickwella	1600.00
OP/OPA	*	<b>Glen Alpin</b>	<b>1200.00</b>
		Dickwella	1200.00
		Misty-Uva	1200.00
OP1		Dickwella	1700.00
PEKOE/PEKOE1		Dickwella	1900.00

UDA PUSSELLAWA			
BOP		Kirklees	1100.00
BOPSP		Delmar	1020.00
BOPF/BOPFSP		Kirklees	900.00
FBOP/FBOP1		Blairlmond	1600.00
FBOPF/FBOPF1		Gampaha	1440.00
BOP1		-	
OP/OPA		Delmar	1120.00
OP1		Delmar	1160.00
PEKOE/PEKOE1		Gampaha	1420.00

CTC HIGH			
PF1		Dunsinane CTC	1140.00
BP1		-	
BPS		Mount Vernon CTC	850.00
OF		-	

CTC MEDIUM			
PF1		New Peacock CTC	1200.00
BP1		New Peacock CTC	1240.00
BPS	*	<b>Donside CTC</b>	<b>750.00</b>
OF		-	

CTC LOW			
PF1	*	<b>Hingalgoda CTC</b>	<b>1550.00</b>
BP1	*	<b>Cecilayan CTC</b>	<b>1160.00</b>
BPS		Canora CTC	800.00
OF		-	



# TOP PRICES (SALE NO. 19 – 20<sup>TH</sup> / 21<sup>ST</sup> MAY 2025)

LOW			
BOP		Mahaliyadda	2350.00
BOPSP		Stream Line	2200.00
BOPF		Parakaduwa Super	1480.00
BOPFSP		Greenwin Super	2100.00
FBOP		Sunrise	2350.00
FBOP1		Kiruwanaganga	2300.00
FBOPF		Gunawardena	2250.00
FBOPF1		Adams View	1700.00
	*	<b>Lumbini</b>	<b>1650.00</b>
BOP1		Pothotuwa	3000.00
OP1		Pothotuwa	3200.00
		Dampahala	2700.00
	*	<b>Kiruwanaganga</b>	<b>2600.00</b>
OP		Morawakkorale	1600.00
OPA		Green Lanka	1500.00
		Kurunduwatta	1500.00
PEKOE		Lumbini	2450.00
PEKOE1		H P P Teas	2300.00

PREMIUM			
FBOPFSP		Samwin	5450.00
FBOPFEXSP		Ivy Hills	5150.00
FBOPFEXSP1		Dediyagala	4550.00

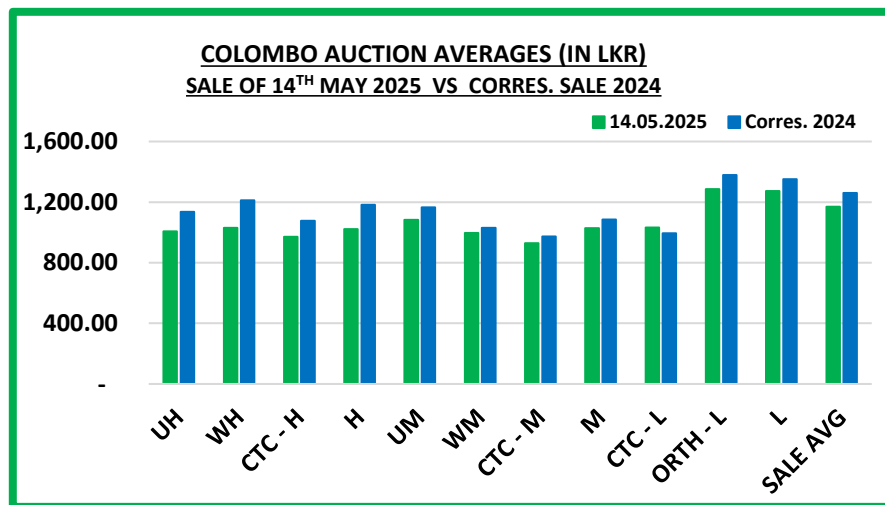
DUST			
DUST1	*	<b>Mattakelle</b>	<b>1550.00</b>
P.DUST	*	<b>Hingalgoda CTC</b>	<b>1320.00</b>
	**	<b>Ceciliyan CTC</b>	<b>1320.00</b>

OFF GRADES			
FNGS/FNGS1	*	<b>Wanarajah</b>	<b>1160.00</b>
PFNGS		Liyonta CTC	1040.00
BM		Aldora	1060.00
		Rain Forest	1060.00
	*	<b>Bogoda</b>	<b>1040.00</b>
	*	<b>Halwitigala S.H</b>	<b>1040.00</b>
BP	*	<b>Jawa Super</b>	<b>1240.00</b>
		Sunrise	1240.00
BOP1A		Aldora	1360.00

**\*\* MORE THAN ONE TOP PRICE OBTAINED**  
**\* TEAS SOLD BY JOHN KEELLS PLC**  
**+ ALL TIME RECORD PRICE**  
**++ ALL TIME RECORD PRICE EQUALED**

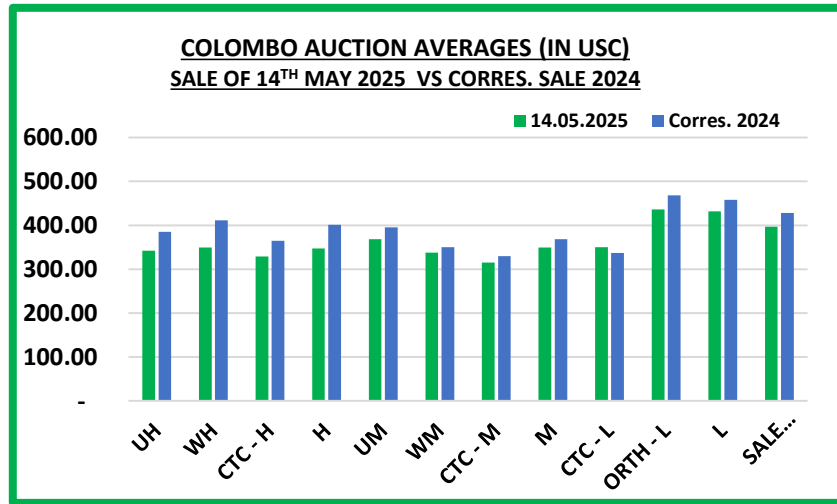


# COLOMBO AUCTION AVERAGES



	Sale of 07/05/2025 In LKR	Sale of 14/05/2025 In LKR	Corres. 2024 In LKR
Uva High Grown	1057.41	1007.49	1135.86
Western High Grown	1061.76	1029.67	1212.52
CTC High Grown	1061.76	970.24	1077.00
<b>Summary of High Grown</b>	<b>1060.12</b>	<b>1022.42</b>	<b>1181.48</b>
Uva Medium Grown	1094.18	1083.17	1166.32
Western Medium Grown	1037.45	997.34	1031.17
CTC Medium Grown	909.21	928.90	972.46
<b>Summary of Medium Grown</b>	<b>1056.89</b>	<b>1028.61</b>	<b>1084.74</b>
CTC Low Grown	1020.64	1032.39	994.37
Orthodox Low Grown	1257.60	1285.60	1379.69
<b>Summary of Low Grown</b>	<b>1242.53</b>	<b>1273.67</b>	<b>1350.83</b>
<b>TOTAL SALE AVERAGE</b>	<b>1166.87</b>	<b>1170.01</b>	<b>1261.40</b>

# COLOMBO AUCTION AVERAGES

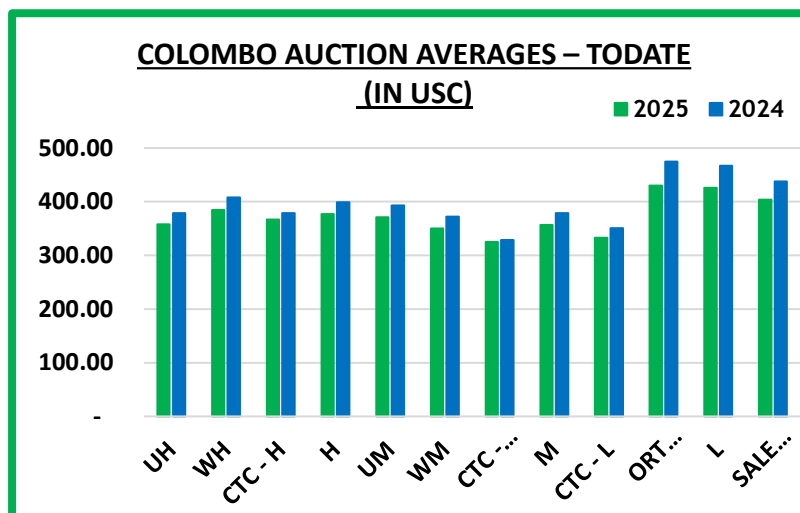
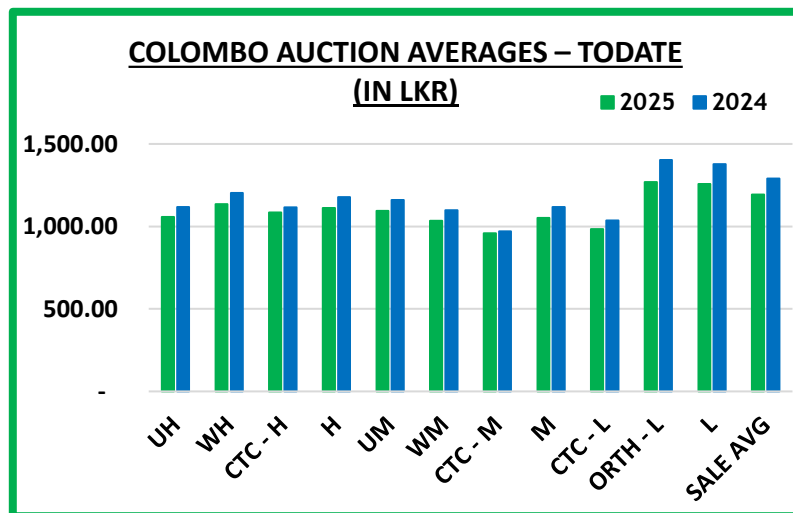


	Sale of 07/05/2025 In USC	Sale of 14/05/2025 In USC	Corres. 2024 In USC
Uva High Grown	358	342	385
Western High Grown	360	349	411
CTC High Grown	360	329	365
<b>Summary of High Grown</b>	<b>359</b>	<b>347</b>	<b>401</b>
Uva Medium Grown	371	368	395
Western Medium Grown	351	338	350
CTC Medium Grown	308	315	330
<b>Summary of Medium Grown</b>	<b>358</b>	<b>349</b>	<b>368</b>
CTC Low Grown	346	350	337
Orthodox Low Grown	426	436	468
<b>Summary of Low Grown</b>	<b>421</b>	<b>432</b>	<b>458</b>
<b>TOTAL SALE AVERAGE</b>	<b>395</b>	<b>397</b>	<b>428</b>





# COLOMBO AUCTION AVERAGES



January to Date (Sale No.18)	2025 LKR	2024 LKR	2025 USC	2024 USC
Uva High Grown	1057.46	1118.11	358	379
Western High Grown	1134.64	1202.07	385	408
CTC High Grown	1084.16	1116.39	367	379
<b>Summary of High Grown</b>	<b>1111.14</b>	<b>1177.63</b>	<b>377</b>	<b>399</b>
Uva Medium Grown	1094.44	1159.86	371	393
Western Medium Grown	1033.31	1098.12	350	372
CTC Medium Grown	958.64	970.83	325	329
<b>Summary of Medium Grown</b>	<b>1052.51</b>	<b>1117.58</b>	<b>357</b>	<b>379</b>
CTC Low Grown	983.74	1035.94	333	351
Orthodox Low Grown	1269.76	1402.31	430	475
<b>Summary of Low Grown</b>	<b>1256.46</b>	<b>1376.68</b>	<b>426</b>	<b>467</b>
<b>TOTAL SALE AVERAGE</b>	<b>1192.50</b>	<b>1291.18</b>	<b>404</b>	<b>438</b>



# COLOMBO AUCTION AVERAGES

FROM 01 <sup>ST</sup> TO 14 <sup>TH</sup> MAY 2025	LKR
Uva High Grown	1043.01
Western High Grown	1059.02
<b>Summary of High Grown</b>	<b>1053.42</b>
Uva Medium Grown	1090.25
Western Medium Grown	1006.65
<b>Summary of Medium Grown</b>	<b>1034.45</b>
<b>Summary of Low Grown</b>	<b>1248.18</b>
<b>TOTAL SALE AVERAGE</b>	<b>1161.35</b>



# ALL BROKERS PRIVATE SALE FIGURES (FOR THE PERIOD – 14<sup>TH</sup> TO 17<sup>TH</sup> MAY 2025)

	WEEKLY	TODATE
High & Medium	136,356.00	2,660,600.05
Low	52,236.50	515,043.95
Green Tea	50,534.00	742,062.00
Organic Tea	19,564.00	183,368.00
BMF	12,100.00	746,274.00
Direct Sales	-	-
Forward Contract	40,000.00	1,109,871.00





- **Crop and Weather**
- **Crop Figures**
- **Export Figures**
- **Tea News**

## CROP AND WEATHER - FOR THE PERIOD OF 12<sup>TH</sup> TO 18<sup>TH</sup> MAY 2025



### **Western**

Bright weather with occasional evening showers were recorded in Agarapatana and Talawakelle districts, whilst Dickoya reported rainfall throughout the week.



### **Nuwara Eliya**

Nuwara Eliya reported bright weather with evening showers, whilst Kandapola recorded dull weather with occasional rainfall.



### **Uva**

Badulla and Lunugala recorded bright weather throughout the week, whilst Haputale district reported dull weather with occasional rainfall.



### **Low Grown**

Bright weather with occasional evening showers were recorded in Deniyaya, whilst Galle and Rathnapura districts reported rainfall throughout the week.



### **Crop**

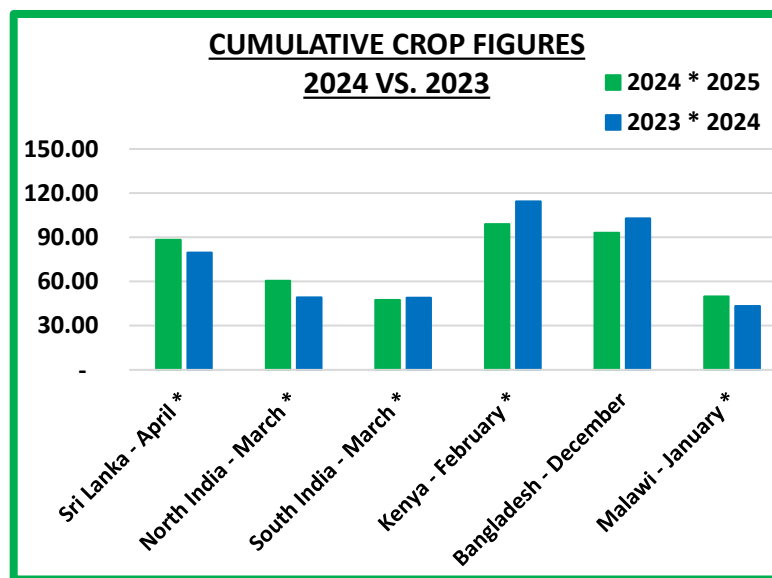
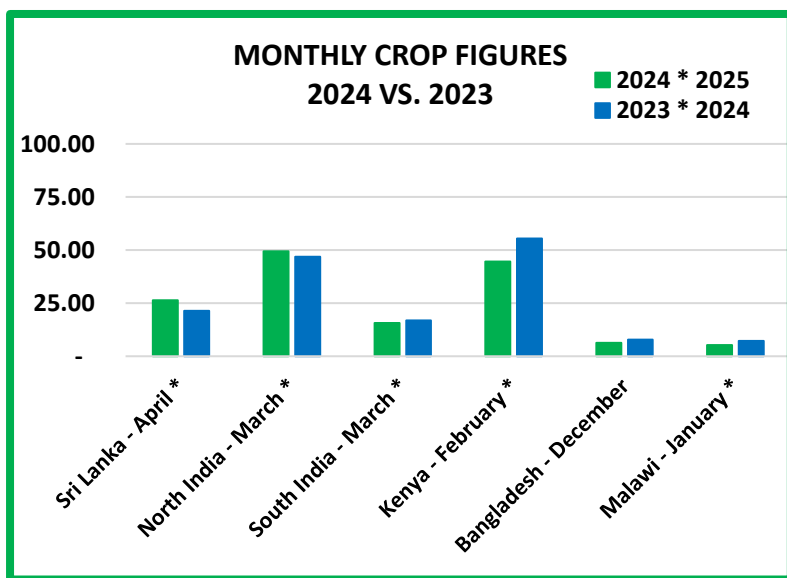
Crop intake is moderate.



# CROP FIGURES OF MAJOR PRODUCING & EXPORTING COUNTRIES

Country	Month	2024 * 2025	2023 * 2024	Cumulative + Inc. / Dec.	Cumulative	2024 * 2025	2023 * 2024	Cumulative + Inc. / Dec.
Sri Lanka	April	*26.39	*21.46	+ 4.93	Upto April	*88.38	*79.73	+ 8.65
North India	March	*49.43(E)	*46.90	+ 2.53	Upto March	*60.44(E)	*49.18	+ 11.26
South India	March	*15.71(E)	*16.88	- 1.17	Upto March	*47.48(E)	*48.98	- 1.50
Kenya	February	* 44.61	* 55.44	- 10.83	Upto February	* 98.98	* 114.41	- 15.43
Bangladesh	December	6.37	7.79	-1.42	Upto December	93.04	102.95	- 9.91
Malawi	January	* 5.30	* 7.20	- 1.90	Upto January	* 49.79	* 43.35	+ 6.44

(E) - Estimated







# SRI LANKA TEA CROP

We give below the Sri Lanka Tea Crop for the month of April 2025 together with January / April 2025, and the corresponding figures for 2024.

	APRIL		JANUARY – APRIL	
	2025	2024	2025	2024
<b>ORTHODOX</b>				
High Grown	5,671,046	4,035,630	18,063,653	15,488,169
Medium Grown	4,306,166	3,035,857	13,099,233	11,371,241
Low Grown	13,738,829	12,498,798	48,572,474	45,004,272
<b>TOTAL</b>	<b>23,716,041</b>	<b>19,570,286</b>	<b>79,735,360</b>	<b>71,863,682</b>
<b>CTC</b>				
High Grown	566,500	474,782	1,739,982	1,806,613
Medium Grown	980,218	447,412	3,007,751	2,051,331
Low Grown	909,355	820,984	3,092,049	3,350,667
<b>TOTAL</b>	<b>2,456,073</b>	<b>1,743,177</b>	<b>7,839,782</b>	<b>7,208,610</b>
<b>TOTAL BLACK PRODUCTION</b>				
High Grown	6,237,546	4,510,412	19,803,635	17,294,781
Medium Grown	5,286,384	3,483,269	16,106,984	13,422,572
Low Grown	14,648,183	13,319,782	51,664,523	48,354,939
<b>TOTAL</b>	<b>26,172,113</b>	<b>21,313,463</b>	<b>87,575,142</b>	<b>79,072,292</b>
<b>GREEN TEA</b>				
High Grown	116,010	78,371	423,864	361,504
Medium Grown	103,993	71,992	381,659	297,265
Low Grown	421	782	1,523	2,377
<b>TOTAL</b>	<b>220,423</b>	<b>151,145</b>	<b>807,045</b>	<b>661,146</b>
<b>TOTAL PRODUCTION</b>				
High Grown	6,353,556	4,588,783	20,227,499	17,656,285
Medium Grown	5,390,377	3,555,261	16,488,643	13,719,837
Low Grown	14,648,604	13,320,564	51,666,045	48,357,316
<b>TOTAL</b>	<b>26,392,537</b>	<b>21,464,608</b>	<b>88,382,187</b>	<b>79,733,439</b>

SOURCE : SRI LANKA TEA BOARD



# SRI LANKA TEA CROP - Continued;



Tea Production April 2025								
Black Tea Production According To Elevations								
Elevation	April (Kg)				January to Date (Kg)			
	2025	2024	Change	% Change	2025	2024	Change	% Change
High	6,353,556	4,588,783	1,764,773	38.46%	20,227,499	17,656,285	2,571,214	14.56%
Medium	5,390,377	3,555,261	1,835,116	51.62%	16,488,643	13,719,837	2,768,806	20.18%
Low	14,648,604	13,320,564	1,328,040	9.97%	51,666,045	48,357,316	3,308,729	6.84%
Total	26,392,537	21,464,608	4,927,929	22.96%	88,382,187	79,733,439	8,648,748	10.85%
Tea Production According To Categories								
Production	April (Kg)				January to Date (Kg)			
	2025	2024	Change	% Change	2025	2024	Change	% Change
Orthodox	23,716,041	19,570,286	4,145,755	21.18%	79,735,360	71,863,682	7,871,678	10.95%
CTC	2,456,073	1,743,177	712,896	40.90%	7,839,782	7,208,610	631,172	8.76%
Green Tea	220,423	151,145	69,278	45.84%	807,045	661,146	145,899	22.07%
Total	26,392,537	21,464,608	4,927,929	22.96%	88,382,187	79,733,439	8,648,748	10.85%

SOURCE : SRI LANKA TEA BOARD



# SRI LANKA TEA EXPORTS



DESCRIPTION	QTY (KG)	VALUE (RS)	APPROX.AV.UNIT FOB VALUE PER KG.RS/CTS
<b>APRIL 2025</b>			
Instant Tea	236,705.34	850,885,736.00	3,594.70
Tea in Packets	8,840,030.22	14,327,523,103.00	1,620.75
Green Tea	368,452.21	1,277,252,725.00	3,466.54
Tea in Bags	1,879,014.83	5,150,490,288.00	2,741.06
Tea in Bulk	6,880,618.17	10,439,938,124.00	1,517.30
<b>Total</b>	<b>18,204,820.77</b>	<b>32,046,089,976.00</b>	<b>1,760.31</b>
<b>APRIL 2024</b>			
Instant Tea	155,166.41	573,287,410.00	3,694.66
Tea in Packets	6,498,229.24	10,753,359,095.00	1,654.81
Green Tea	355,463.68	1,241,811,959.00	3,493.50
Tea in Bags	1,591,935.83	4,281,707,396.00	2,689.62
Tea in Bulk	7,775,596.80	11,734,004,485.00	1,509.08
<b>Total</b>	<b>16,376,391.96</b>	<b>28,584,170,345.00</b>	<b>1,745.45</b>
<b>JANUARY / APRIL 2025</b>			
Instant Tea	940,841.59	3,286,110,145.00	3,492.73
Tea in Packets	35,837,709.12	58,401,976,890.00	1,629.62
Green Tea	1,505,924.00	5,718,617,476.96	3,797.41
Tea in Bags	8,539,414.27	22,944,585,352.00	2,686.90
Tea in Bulk	34,586,812.67	51,597,068,797.00	1,491.81
<b>Total</b>	<b>81,410,701.65</b>	<b>141,948,358,660.96</b>	<b>1,743.61</b>
<b>JANUARY / APRIL 2024</b>			
Instant Tea	843,497.76	2,719,516,787.00	3,224.09
Tea in Packets	31,383,650.36	52,875,012,161.00	1,684.79
Green Tea	1,518,364.53	5,819,190,196.00	3,832.54
Tea in Bags	8,174,502.52	22,264,942,823.00	2,723.71
Tea in Bulk	36,784,430.06	55,813,816,988.00	1,517.32
<b>Total</b>	<b>78,704,445.23</b>	<b>139,492,478,955.00</b>	<b>1,772.36</b>





# MAJOR IMPORTERS OF SRI LANKA TEA

## JANUARY / APRIL 2025

COUNTRY	BULK TEA	PACKETED TEA	TEA BAG	INSTANT TEA	GREEN TEA	TOTAL 2025	TOTAL 2024
IRAQ	809,225.00	10,459,325.99	248,045.28	4.80	10,884.00	11,527,485.07	10,239,979.65
LIBYA	-	7,575,555.00	8,520.00	408.00	28,320.00	7,612,803.00	1,681,733.80
RUSSIA	5,829,376.00	1,312,003.41	184,756.24	-	177,810.73	7,503,946.38	8,277,024.91
U.A.E.	3,631,467.75	1,578,108.10	92,394.12	1,482.29	218,461.97	5,521,914.23	8,492,829.46
TURKEY	1,853,069.25	2,428,345.00	15,828.00	-	-	4,297,242.25	5,291,741.92
IRAN	2,996,776.75	1,092,755.00	940.00	-	-	4,090,471.75	4,127,790.50
CHILE	2,894,185.00	98,319.66	752,936.41	1,303.99	26,641.58	3,773,386.64	2,655,007.71
CHINA	2,745,898.02	318,627.38	73,915.78	1,069.72	14,455.32	3,153,966.22	3,377,962.92
SAUDI ARABIA	672,252.00	1,433,842.57	707,150.57	12,025.90	71,690.16	2,896,961.20	3,242,973.96
GERMANY	2,039,148.00	601,989.36	62,936.02	15,560.00	16,460.94	2,736,094.32	2,788,650.08



# TEA NEWS AROUND THE GLOBE



## MOMBASA MARKET

SALE NO. 20 – SALE OF 19<sup>TH</sup> / 20<sup>TH</sup> MAY 2025

Fairly improved general demand at irregular levels for the 206,458 packages (14,074,519.00 kilos) on offer; 33.70% was unsold.

### OFFERINGS

Leaf Grades	-	103,300 packages (6,738,219.00 kilos) – 40.21% unsold.
Dust Grades	-	85,200 packages (6,380,058.00 kilos) – 29.44% unsold.
Secondary Grades	-	17,258 packages ( 923,846.00 kilos) – 15.76% unsold.

### MARKETS

**Pakistan Packers** were active but at lower levels with more enquiry from **Yemen** and **other Middle Eastern countries**. **Kazakhstan** and **other CIS states** lent strong support with some participation from **Bazaar**. **Afghanistan** were active with less enquiry from **UK**. **Egyptian Packers** lent good support at steady rates with some interest from **Russia**. **Sudan** were absent while **South Sudan** maintained activity. **Local Packers** reduced enquiry with **Somalia** active at the lower end of the market.

### LEAF GRADES (M2 & M3)

#### **BP1:**

**Best** – Saw very irregular interest and varied between USC16 dearer with some teas USC42 and USC80 above previous levels to easier by USC26 and some lines were further discounted by USC38 and USC59.

**Brighter** – Were up to USC19 dearer to easier by up to USC15.

**Mediums** – KTDA mediums were irregular varying between USC12 dearer with some invoices up to USC22 above last rates to easier by up to USC17 while better plantation mediums were well sought after appreciating by up to USC42.

**Lower Medium** – Were steady to USC5 dearer to easier by up to USC12.

**Plainer** – Improved absorption at firm to USC10 above previous rates to easier by up to USC5.

#### **PF1:**

**Best** – Met irregular enquiry ranging between steady to USC22 dearer to easier by up to USC14.

**Brighter** – Mostly shed by up to USC28 but select invoices were up to USC2 above previous rates.

**Mediums** – KTDA mediums were irregular and varied between steady to dearer by up to USC7 to easier by up to USC16. Plantation mediums were firm to USC4 above previous levels to easier by up to USC7.

**Lower Medium** – Lost up to USC16 but some invoices gained by up to USC6.

**Plainer** – Irregular enquiry and ranged between steady to USC31 dearer to easier by up to USC5.

### DUST GRADES (M1)

#### **PDUST:**

**Best** – Were well absorbed at irregular rates ranging between USC16 dearer to easier by up to USC20.

**Brighter** – Irregular and varied between mostly dearer by up to USC19 with some lines easier by up to USC4.

**Mediums** – KTDA mediums were USC15 above last levels to easier by up to USC10 with plantation mediums irregularly shedding by up to USC15.

**Lower Medium** – Discounted by up to USC18.

**Plainer** – Mostly dearer by up to USC9 to USC1 below previous levels.



# TEA NEWS AROUND THE GLOBE



## MOMBASA MARKET – Continued ;

### DUST1:

**Best** – Saw improved enquiry ranging between firm to USC22 dearer to easier by USC4.

**Brighter** – Steady to USC12 above previous levels to easier by up to USC15.

**Mediums** – KTDA mediums saw irregular enquiry at USC12 dearer to mostly easier by up to USC20 with plantation mediums up to USC22 above previous levels to easier by up to USC5.

**Lower Medium** – Lost up to USC15 but select lines gained by USC4.

**Plainer** – Irregular and varied between firm to mostly dearer by up to USC6 to easier by up to USC8.

### SECONDARY GRADES (\$1)

In the Secondary Catalogues, best **BP**s tended easier with others steady while **PF**s were firm to irregularly dearer. Clean well sorted coloury **Fannings** were steady to dearer with **similar DUST**s selling at around previous rates. **Other Fannings** tended dearer while **DUST**s held value. **BMF**s were well absorbed.

QUOTATIONS	BROKENS - USC	FANNINGS - USC
Best	200 – 450	280 – 400
Good	190 – 266	270 – 310
Good Medium	200 – 274	203 – 300
Medium (KTDA)	128 – 187	135 – 247
Medium (Plantations)	131 – 202	125 – 167
Lower Medium	110 – 150	113 – 147
Plainer	093 – 114	081 – 125

AUCTION	KENYA 2024 \$	KENYA 2025 \$	TOTAL 2024 \$	TOTAL 2025 \$
18	2.25	2.03	2.12	1.98
19	2.15	1.91	1.99	1.88
20	2.20	1.86	2.04	1.81

SOURCE : AFRICA TEA BROKERS LTD.





# TEA NEWS AROUND THE GLOBE



## CHITTAGONG MARKET

SALE NO. 03 – 19<sup>TH</sup> MAY 2025

**CTC LEAF:** 23,903 packages of tea on offer met with a better demand.

**BROKENS/FANNINGS:** Well made good liquoring varieties continued to meet with a strong demand at firm to slightly dearer rates following competition and these could be quoted between Tk.270/- and Tk.300/-. Below best varieties were a good market and were about steady in line with quality selling between Tk.230/- and Tk.250/-. All others met with a little more demand at firm to slightly easier rates and these could be quoted between Tk.200/- and Tk.220/-. BLF teas sold fairly well and sold between Tk.160/- and Tk.220/-.

**DUST:** 4,426 packages of tea on offer met with quite a good demand. Good liquoring Dusts sold well at slightly easier rates. Their Mediums sold irregularly following quality. Plain/BLF Dust met with an improved demand and were fully firm to slightly dearer. Blenders lent good support with fair interest from the Loose tea buyers.

**COMMENTS:** There was a little more demand this week from all sections of the market. The best varieties continued to sell at firm to slightly dearer rates in line with quality. Blenders again lent strong support with Loose tea buyers operating more actively.

Dusts sold well.

Our Catalogue: (Sale 3) Avg : Tk 239.05, Sold 70.25% , (Sale 2) Avg : Tk 211.70, Sold 43.48% .

### Quotations – This Week – (In Taka)

Brokens	This Week	Last Week	Fannings	This week	Last Week	Dust	This week	Last Week
Best	270-300	270-300	Best	270-300	270-300	PD	250-280	269-272
Good	230-250	235-250	Good	230-250	235-250	RD	215-303	162-306
Medium	210-220	215-225	Medium	210-220	220-230	D	235-300	208-272
Plain	185-200	185-205	Plain	185-220	185-205	CD	250-319	232-320
BLF	160-220 nom	160-205	BLF	160-220 nom	160-205	BLF	165-265	160-220

Exchange Rates 19<sup>th</sup> May 2025 Sterling Pound 159.9089 Dollar: Tk. 121.0000

SOURCE : NATIONAL BROKERS LTD



# TEA NEWS AROUND THE GLOBE



## SILIGURI MARKET

SALE NO. 20 – 16<sup>TH</sup> MAY 2025

### 1. MARKET DESCRIPTION :

- DEMAND - GOOD FOR ESTATES AND FAIR FOR REMAINDER.
- PRICES FOR ESTATES WERE FIRM TO DEARER WITH GOOD COMPETITION FOR THE IMPROVED VARIETIES.
- REMAINDER WERE IRREGULAR AND EASIER WITH FAIR OUT LOTS FOR THE COMMON/PLAINER SORTS.
- INTERNAL BUYERS DOMINATED THE QUALITY SEGMENT WITH FAIR SUPPORT FROM EXPORTERS AND MAJOR BLENDERS.
- THE TO-DATE DUST AVERAGE PRICE IS HIGHER THAN LEAF WHEN COMPARED TO THE LAST TWO YEARS.

### 2. TOTAL AUCTION WEIGHTED AVERAGE ( ₹ )

	2025-26			2024-25			UPTO SALE - 20		
	SALE - 20	SALE - 19	+/-	SALE - 20	SALE - 19	+/-	2025-26	2024-25	2023-24
LEAF	178.58	183.33	-4.75	196.46	189.65	6.81	194.21	200.07	183.77
DUST	180.89	184.38	-3.49	187.77	184.62	3.15	196.46	196.03	179.21
TOTAL	178.85	183.47	-4.62	195.27	189.04	6.23	194.45	199.65	183.31

SOURCE: PARCON INDIA PVT LTD

## GUWAHATI MARKET

SALE NO. 20 – SALE OF 16<sup>TH</sup> MAY 2025

### 1. MARKET DESCRIPTION :

- DEMAND- IMPROVED FOR THE QUALITY DUST GRADES, SLUGGISH FOR REMAINDER.
- GOOD /BEST TEAS SOLD AROUND LAST, REMAINDER EASED WITH FAIR WITHDRAWALS. CLEANER SORTS MOVED WELL.
- PREMIUM DUST AND CD GRADES SOLD READILY AT ATTRACTIVE RATES. FANNING AND PD GRADES WITNESSED LESS ENQUIRY AND WERE CLEARLY EASIER.
- PERCENTAGE OF TEAS SOLD BETWEEN RS.100/- TO 120/- INCREASED THIS WEEK TO 2.8% AS AGAINST 0.7% OF THE PREVIOUS WEEK.
- HUL OPERATED IN THE LEAF AND REMNED MAINSTAY IN THE DUST SEGMENT, PARTICULARLY FOR THE PREMIUM DUSTS.
- WESTERN INDIA BUYERS WERE ACTIVE ON LIQUORING TEAS. INTERNAL TRADERS AND EXPORTERS LENT FAIR SUPPORT. TCPL AND OTHER PACKERS WERE SELECTIVE.

### 2. TOTAL AUCTION WEIGHTED AVERAGE ( ₹ )

	2025-26			2024-25			UPTO SALE - 20		
	SALE - 20	SALE - 19	+/-	SALE - 20	SALE - 19	+/-	2025-26	2024-25	2023-24
LEAF	204.10	206.98	-2.88	212.94	215.04	-2.10	214.99	229.04	201.14
DUST	215.59	220.48	-4.89	203.25	213.08	-9.83	225.16	221.40	194.55
TOTAL	207.58	211.35	-3.77	210.02	214.48	-4.46	218.21	226.84	199.34

SOURCE: PARCON INDIA PVT LTD



# TEA NEWS AROUND THE GLOBE



## KOLKATA ORTHODOX / CTC MARKET

SALE NO. 20 - 16<sup>TH</sup> MAY 2025

### 1. MARKET DESCRIPTION :

- STRONG DEMAND.
- LEVELS AROUND LAST WITH THE IMPROVED SORTS ALSO APPRECIATING AT TIMES.
- SECONDARY GRADES READILY ABSORBED IN LINE WITH QUALITY.
- EXPORTERS TO THE MIDDLE EAST AND CIS WERE ACTIVE.

### 2. TOTAL AUCTION WEIGHTED AVERAGE (₹ )

	WHOLE LEAF		BROKENS		FANNINGS
	1ST LINE	2ND LINE	LARGER	SMALLER	LEAFY
BEST	480-540+	430-450+	360-390+	340-380+	250-300+
GOOD	420-460+	400-420+	330-350	300-340	210-250
MEDIUM	370-410	340-380+	290-320	250-290	150-200

### 1. MARKET DESCRIPTION :

- DEMAND - FAIR FOR LEAF AND GOOD FOR DUST.
- BEST/GOOD & BETTER MEDIUM ASSAMS IN THE LEAF CATEGORY EASED IN LINE WITH QUALITY, WHILST THE MEDIUM/PLAINER SORTS WERE IRREGULAR AROUND LAST. DOOARS BOUGHT LEAF FOLLOWED LAST WEEK'S LEVELS.
- LIQUORING ASSAMS IN THE DUST SEGMENT WERE STEADY AND OFTEN APPRECIATED WITH COMPETITION. PD'S, CONTINUED TO WITNESS LESSER ENQUIRY. THE PERCENTAGE OF TEAS SELLING BETWEEN RS 120 -140 WITNESSED A ROBUST INCREASE IN DEMAND.
- HUL AND WI MAINSTAY WITH FAIR SUPPORT FROM EXPORTERS AND LOCAL DEALERS. TCPL WAS VERY SELECTIVE AT LOWER LEVELS.

### 2. TOTAL AUCTION WEIGHTED AVERAGE (₹ )

	2025-26			2024-25			UPTO SALE - 20		
	SALE - 20	SALE - 19	+/-	SALE - 20	SALE - 19	+/-	2025-26	2024-25	2023-24
LEAF	211.28	235.63	-24.35	236.55	234.49	2.06	215.72	228.51	192.03
DUST	290.84	287.91	2.93	245.79	231.77	14.02	286.20	248.64	212.88
TOTAL	235.17	252.66	-17.49	239.34	233.72	5.62	235.78	233.83	196.73

SOURCE: PARCON INDIA PVT LTD



# UPCOMING AUCTION DETAILS

Auction No.	21		20	
Dates	03 <sup>rd</sup> / 04 <sup>th</sup> June 2025		27 <sup>th</sup> / 28 <sup>th</sup> May 2025	
	No. of Lots	Qty – kg	No. of Lots	Qty – kg
Ex-Estate	857	908,776	953	1,004,970
Main Sale Total	11,543	5,807,328	11,453	5,665,400
High & Medium	1,938	898,013	2,185	1,086,003
Low Grown – Leafy	1,935	818,253	2,203	936,224
Low Grown – Semi Leafy	1,599	697,935	1,690	762,169
Low Grown Tippy	1,968	943,437	2,463	1,229,219
Premium / Flowery	310	51,812	464	74,690
Off Grades	3,011	1,647,851	1,987	1,132,194
Dust	782	750,027	461	444,901
Grand Total	12,400	6,716,104	12,406	6,670,370
Reprints	1,108	565,319	871	461,822
<b>Total No. of Lots on Offer</b>	<b>12,400</b>		<b>12,406</b>	
<b>Total Quantity on Offer (kg)</b>	<b>6,716,104</b>		<b>6,670,370</b>	



## SCHEDULED CLOSING DATES

Auction No.	Date of Sale	Ex-Estate	Main Sale
22	09 <sup>th</sup> / 10 <sup>th</sup> June 2025	22/05/2025	22/05/2025
23	17 <sup>th</sup> / 18 <sup>th</sup> June 2025	29/05/2025	29/05/2025
24	24 <sup>th</sup> / 25 <sup>th</sup> June 2025	05/06/2025	05/06/2025

## PROMPT DATES

Auction No.	Buyers	Sellers
20	03/06/2025	04/06/2025
21	11/06/2025	12/06/2025
22	17/06/2025	18/06/2025



## ORDER OF SALE (SALE NO. 20 – 27<sup>TH</sup> / 28<sup>TH</sup> MAY 2025)

Main Sale Order – 1 (Leafy / Semi Leafy / Tippy / Premium / 1A)	Main Sale Order – 2 (H & M / Off Grade / Dust)	Ex-Estate
MERCANTILE PRODUCE BROKERS (PVT) LTD	MERCANTILE PRODUCE BROKERS (PVT) LTD	FORBES & WALKER TEA BROKERS (PVT) LTD
BARTLEET PRODUCE MARKETING (PVT) LTD	FORBES & WALKER TEA BROKERS (PVT) LTD	EASTERN BROKERS. LTD.
LANKA COMMODITY BROKERS LTD	EASTERN BROKERS. LTD.	CEYLON TEA BROKERS PLC
JOHN KEELLS PLC	JOHN KEELLS PLC	JOHN KEELLS PLC
CEYLON TEA BROKERS PLC	CEYLON TEA BROKERS PLC	LANKA COMMODITY BROKERS LTD
EASTERN BROKERS. LTD.	BARTLEET PRODUCE MARKETING (PVT) LTD	BARTLEET PRODUCE MARKETING (PVT) LTD
ASIA SIYAKA COMMODITIES PLC.	ASIA SIYAKA COMMODITIES PLC.	MERCANTILE PRODUCE BROKERS (PVT) LTD
FORBES & WALKER TEA BROKERS (PVT) LTD	LANKA COMMODITY BROKERS LTD	ASIA SIYAKA COMMODITIES PLC.

[ RR : HR / SG ]





# INTERNATIONAL *Tea Day*

-21 MAY 2025-



"Where there's tea, there's hope."

- Arthur Wing Pinero

